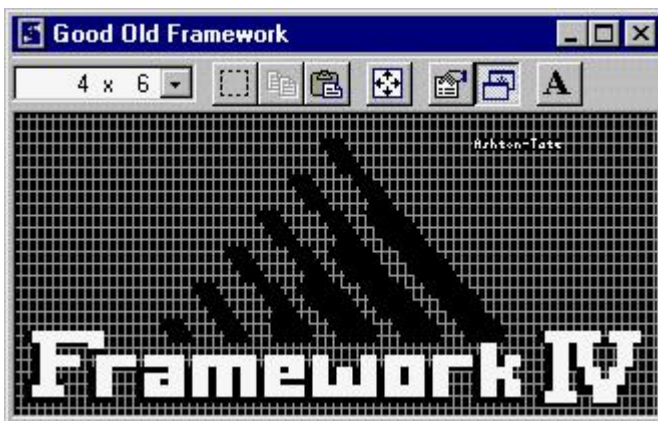


1 Welcome

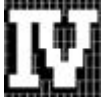
The purpose of this document is to give you some assistance in order to run Framework III/IV flawlessly on modern machines.



2 Requirements

Requirements

- Win 2000, XP or higher
- Framework III or IV with our modification



3 FAQ

Framework III does not display all directories, how can i access all my files?

This is another bug of Framework III. If any directory has an archive flag set, then FW III thinks this directory is a file! (The archive bit of a file or directory is set by backup programs). Solution:

1. Open the Windows explorer.
2. Mark the problem directory.
3. Click the directory with the right mouse key.
4. Select "properties" in the popup menu.
5. Deactivate the "Archive" flag.
6. Acknowledge with "OK".

After this FW III will recognize the directory. However, you may have to reopen the directory. Framework IV is not concerned of this bug.

I cannot print out of Framework, what can i do (Win9x/Me only)?

This is a very common problem of old DOS applications. Also Framework is concerned. If you cannot manage to print from Framework, please follow the following steps (Some Windows folders and buttons may be named a little bit different, but you should find a way on your system):

1. Doubleclick "My computer" (mostly in the left top corner of the desktop)
2. Doubleclick the folder "printer"
3. Rightclick the printer you want to use
4. Select "settings"
5. Select "details"
6. Select "connection settings"
7. Unselect "save printjob temporary"
8. Unselect "check connection before printing"
9. Close all window

Recommended configuration of Framework running on Windows

If there are any problems to get Framework going again we suggest to modify the following adjustments in the memory management (you can do this in "setupfw.exe"):

Memory usage	ACTUAL ENTRTY	NEW ENTRTY
(1) Size of OVERLAY-Puffers	35	same
(2) Memory Extension (EIN/AUS)	On	same
(3) Driver for Memory Extension	Harddrive or RAM	same
(4) sizeo of Memory Extension	800	same
(5) Dirve for Memory Extension	C	same
(6) File relocation in DOS	Off	same

The use of a swapfile is certainly the slowest solution. You will, however, have the least problems with old Dos relicts like Himem.sys and Emm386.exe. Furthermore, speed is not really important for the use of Framework with new generation processors.

The modified Framework III crashes under Windows 2000/XP

The mouse driver for the DOS emulation forces Framework III to crash. See [here](#) for a detailed workaround.

4 The mouse workaround

4.1 The problem

Framework III crashes on some systems if the mouse is moved or the CTRL key is pressed. This is caused by the DOS mouse driver of Windows 2000/XP.

The only solution we found is to connect an additional mouse and load another DOS mouse driver. The second mouse is for the use with Framework only, the first mouse can be used with Windows.

In the [following chapter](#) we describe the procedure how to install an alternative mouse driver for the Framework DOS box.

4.2 Solution step1

Install the new mouse

1. Shut down your computer.
2. Connect the additional mouse to Com-port 1 (serial port) of your computer.
3. Start your computer
4. Windows 2000/XP will find a second mouse (both are working!). You now have to disable the serial mouse on port Com1 for Windows 2000/XP, otherwise the DOS mouse driver will not be able to access the mouse.

Click on "Start->program files->Verwaltung->Computerverwaltung":



Rightclick on the mouse entry and select disable. Afterwards the disabled mouse (the mouse should be marked with a red x) is free for the use with Framework in a DOS box.

4.3 Solution step 2

1. Copy the mouse driver "MMOUSE.COM" into your Framework directory. On our system this is "d:\FW3".
2. Create a text file "autoexec.fw" in your Framework directory. It should contain the following line:

d:\fw3\MMOUSE.COM /1

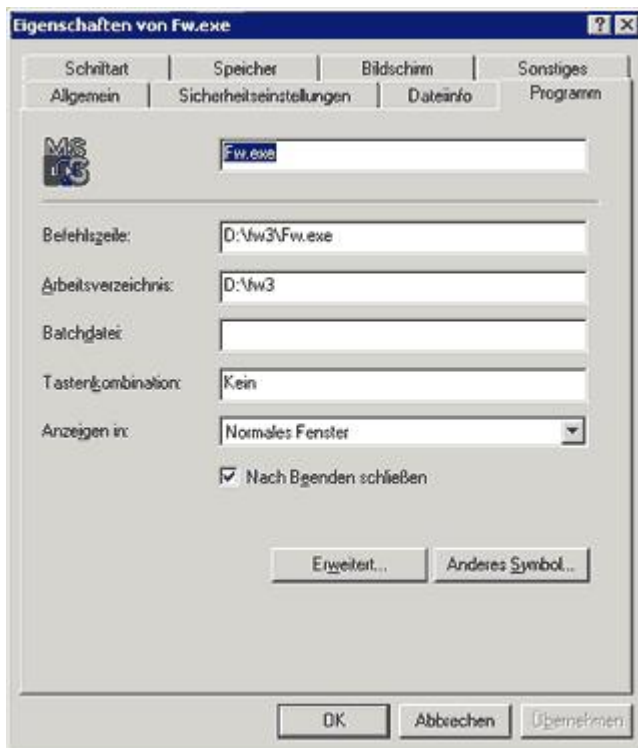
(The /1 argument sets the com port to 1, this is very important!)

4.4 Solution step 3

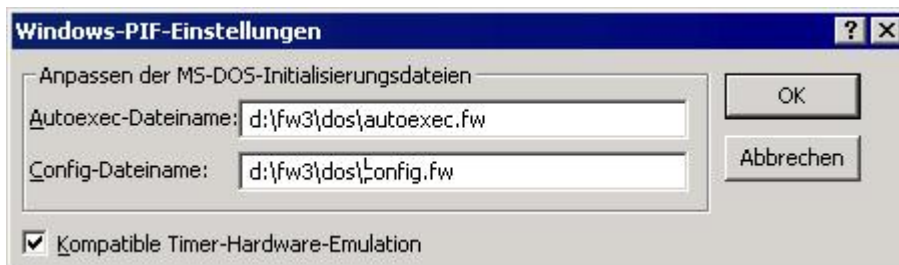
Create a desktop link to your Framework Exe file



Edit the link properties:

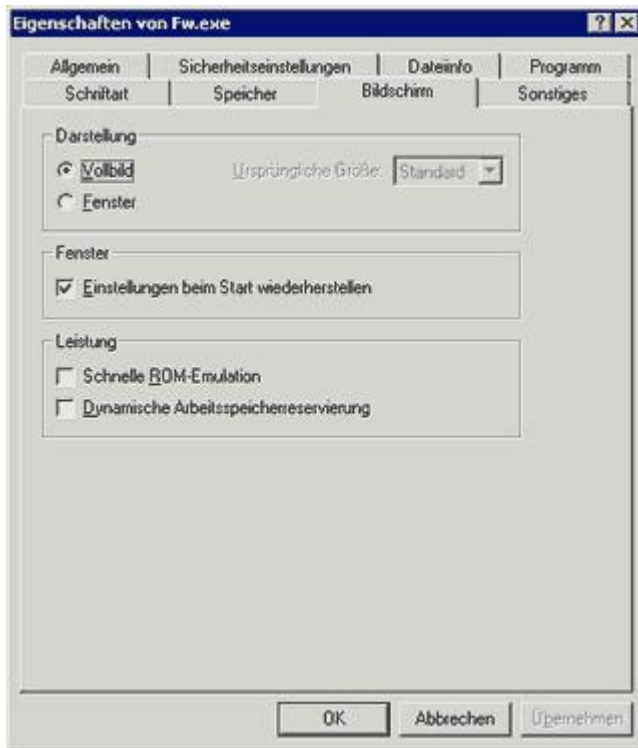


press the "advanced" (Erweitert) button and change the autoexec filename to:
"d:\fw3\autoexec.fw":



(the config file needs no change)

In the screen section apply this settings:



Press Ok. We are done.

From now on you should be able to start FW III without crashes.

5 FAQ

Please visit our website for more information

www.rl-software.com/faq

6 License Terms

LICENSE TERMS for all Ruhrmann & Linneberg GbR software products

By downloading, installing, running or copying this Ruhrmann & Linneberg GbR software product you agree to the following license terms. These license terms are a legally binding agreement between the you (Licensee) and the Ruhrmann & Linneberg GbR (Licensor).

YOU SHOULD CAREFULLY READ THE FOLLOWING TERMS AND CONDITIONS BEFORE USING THIS SOFTWARE. UNLESS YOU HAVE A DIFFERENT LICENSE AGREEMENT SIGNED BY THE LICENSOR YOUR USE OF THIS SOFTWARE INDICATES YOUR ACCEPTANCE OF THIS LICENSE AGREEMENT AND WARRANTY.

TERMS AND CONDITIONS

I. COPYRIGHTS

This software, all its components, the manual as well as the concept of the program are subject to the copyrights of the Licensor protected by German and international copyright laws and international treaties. The software is licensed to the Licensee, not sold. The Licensee does not receive any ownership or proprietary rights in or to the software. The Licensee receives the limited, not exclusive right to use the program on a single computer. This right is not transferable, rentable or lendable. If the Licensee wants to use the program on more computers or in a network environment with more user terminals than covered by the license, he has to purchase an appropriate number of licenses. It is not allowed to run this software to provide a service for third parties, especially not to provide an internet based service for third parties.

Apart from solely saving the program for the sake of the Licensee's data security and software archiving, it is strictly forbidden to copy, duplicate, publish or change the program as a whole or in parts.

The TRIAL-VERSION of the software may, however, be copied within the boundaries given in section VI.

II. WARRANTY

The warranty will follow the German legal regulations so that, in the event of a deficiency in the product, we will first deliver a subsequent product or improve the product at your choice. If the improvement fails or the additional delivery is equally deficient, you can return the product for a refund or keep the product at a reduced price.

Besides this, the software program and the program files are licensed to the Licensee "as is" and "as tested with the trial version". No guaranties of any kind, express or implied, including but not limited to, implied guaranties, of merchantability or fitness for any purpose with respect to the software are made. The information given in the documentation or in the files are a pure description of the program. The functionality and the quality of the program are not assured, whether expressly nor implied. The Licensor does not guarantee that the operation of the software will be error free or meet any requirements.

III. LIABILITY FOR DAMAGES

The Licensor will be liable for damages or reimbursement of wasted expenditures, irrespective of their legal cause, only to the following extent:

In case of intentional wrongdoing, malice, and when a guarantee was given for a certain quality, the Licensor will be liable in the full amount.

In case of gross negligence, the Licensor will be liable for damages in the amount of the foreseeable damages.

In all other cases, the Licensor will only be liable for the violation of a material duty under this contract, for liability for defects, and for default; The Licensor will be liable for the foreseeable and typical damages, limited, however to the license fee paid by the Licensee. In the event of loss of data, liability is furthermore limited to the expenditures typical for restoration which would be incurred if backup copies had been regularly created as appropriate for the pertinent risk. The Licensor hereby calls the Licensee's attention to the necessity of making data backups regularly.

The statutory liability for personal injury, damage to health, and death and under the German Product Liability Act remains unaffected.

Based on the current state of the art, data communication via the Internet as well as computer programs may not be warranted to be error-free and/or available at any time. The Licensor is, therefore, not liable for either the permanent, uninterrupted availability of his Internet site, or for technical and electronic errors that are beyond his control.

IV. TERMINATION

This license and the Licensee's right to use the software terminates automatically if the Licensee violates any part of this agreement without notice. The Licensee can also terminate this license at any time. The Licensee agrees to destroy all copies of the software immediately upon termination.

V. TRIAL VERSION

The Licensee is granted the right to duplicate and distribute exact copies of the TRIAL-VERSION of the software product. It is strictly forbidden, to sell the TRIAL-VERSION or to charge any fees for it. It is also forbidden, to distribute or sell the software or

its documentation together with a different product without prior consent by the Licensor.

VI. ENTIRE AGREEMENT

This agreement constitutes the entire agreement between the Licensee and the Licensor and supersedes any prior written or oral agreement concerning the software. The Licensor is not bound by any action, statements, or any provisions made by anyone else. No modification or change in this agreement shall be valid or binding upon the Licensor unless in writing.

VII. APPLICABLE LAW

In addition to the provisions of the present Terms and Conditions, all contractual relationships between the parties are governed by the law of the Federal Republic of Germany, excluding the UN Convention on the International Sale of Goods. Mandatory provisions that apply under the law of the country in which the customer permanently resides are not affected.

If the Customer concerned is a merchant within the meaning of the German Commercial Code, a separate property or a juristic person under public law, then Hamburg, Germany, shall be the sole place of jurisdiction for all disputes arising from the contractual relation.

VIII. SURVIVAL

Should any provision of this agreement be held to be void, invalid, unenforceable or illegal by a court, the validity and enforceability of the other provisions shall not be affected thereby. If any provision is determined to be unenforceable, you agree to a modification of such provision to provide for enforcement of the provision's intent to the extent permitted by applicable law. Failure of a party to enforce any provision of this agreement shall not constitute or be construed as a waiver of such provision or the right to enforce the provision.

BY USING THE SOFTWARE YOU ACKNOWLEDGE THAT YOU HAVE READ AND UNDERSTOOD THE LICENCE TERMS AND YOU AGREE TO BE BOUND BY THIS AGREEMENT'S TERMS AND CONDITIONS. YOU ALSO AGREE THAT THIS AGREEMENT IS THE COMPLETE AND EXCLUSIVE STATEMENT OF THE RIGHTS AND LIABILITIES OF THE PARTIES AND SUPERSEDES ALL PROPOSALS OR PRIOR AGREEMENTS, ORAL OR WRITTEN AND ANY OTHER COMMUNICATION BETWEEN THE PARTIES RELATING TO THE SUBJECT MATTER OF THIS AGREEMENT.

If you do not agree with the terms and conditions of this agreement or do not understand any of them you should immediately un-install and destroy your copy of the software.

© Ruhrmann & Linneberg GbR

7 Free File Conversion Wizard

To convert a large number of files, the demo version and the premium version of the converter allow the usage of our RL-File-Conversion-Wizard.

You can download the Wizard from our website. It's completely free. The usage is very easy and comfortable.



A powerful converting tool for Word and Excel

- Works with Word and Excel (97 or higher)
- External program, changes nothing in Word or Excel. No AddIns!
- Robust multithreaded design, survives most Word/Excel crashes without problem
- Converts an unlimited number of files
- Handles and reproduces nested directory structures
- Assign a new template style to a lot of Word files in one go
- Un/protects your Word and Excel file with passwords
- Easy to use: 5 comfortable steps to specify the conversion process
- Convenient, selfextracting and selfinstalling setup procedure
- Full functional, no restrictions

Please visit our web site at: www.rl-software.com/converter/file-conversion-wizard.htm.

8 Ordering & Contact










8.1 Products



We accept Master, Visa and PayPal. Other payments possible!

You can order all products on our website via our secure online shop

Please click on the images below to contact our web server (You need an internet connection for this):

Web info Product	Trial versions	Price (excl. VAT)	Price (incl. VAT)
 MS Works spreadsheet (*.wks) to Excel Converter. Integrated in MS Excel.		49.00 €	58.31 €
 WKS&WDB Budget converter. Standalone, no MS Excel required.		10.00 €	11.90 €
 Framework III/IV (*.fw3;*.fw4) to Excel Converter		Standard: 100.00 € Premium: 200.00 €	119.00 € 238.00 €
 Framework III/IV (*.fw3;*.fw4) to Word Converter		Standard: 100.00 € Premium: 200.00 €	118.00 € 238.00 €
 Framework Modification for fast Computers	Please <u>contact us</u> for more information.	100.00 €	119.00 €

If you have a valid EU-VAT-ID or live outside the European Union VAT will be waived.

Registered customers can download the latest version from our download area at any time. For the login, you need your email address (stated in your order) and the password we have send you in the order conformation.

To start your order please click the image below. You need an internet connection for this. On our website please click the "order online" button of the requested product. You will be directed to the secure online shop then.



8.2 Our address



Ruhrmann & Linneberg GbR

EDV-Lösungen - Entwicklung & Vertrieb

Klosterallee 55

20144 Hamburg

Geschäftsführer:

Ust.-ID Nr. (VAT):

Tel: +49 40 4328 2872

Fax: +49 40 4318 3285

info@rl-software.com

www.rl-software.com

Klaus Ruhrmann, Olaf Linneberg

DE194933831